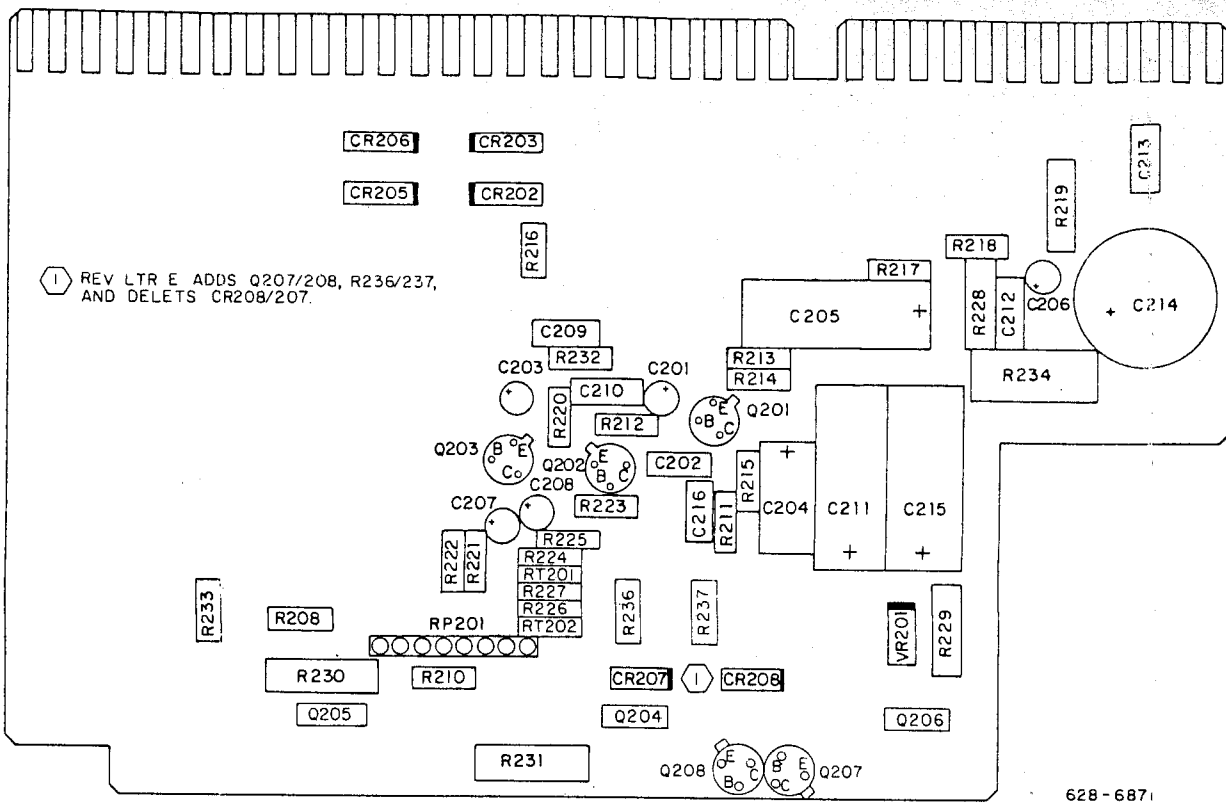


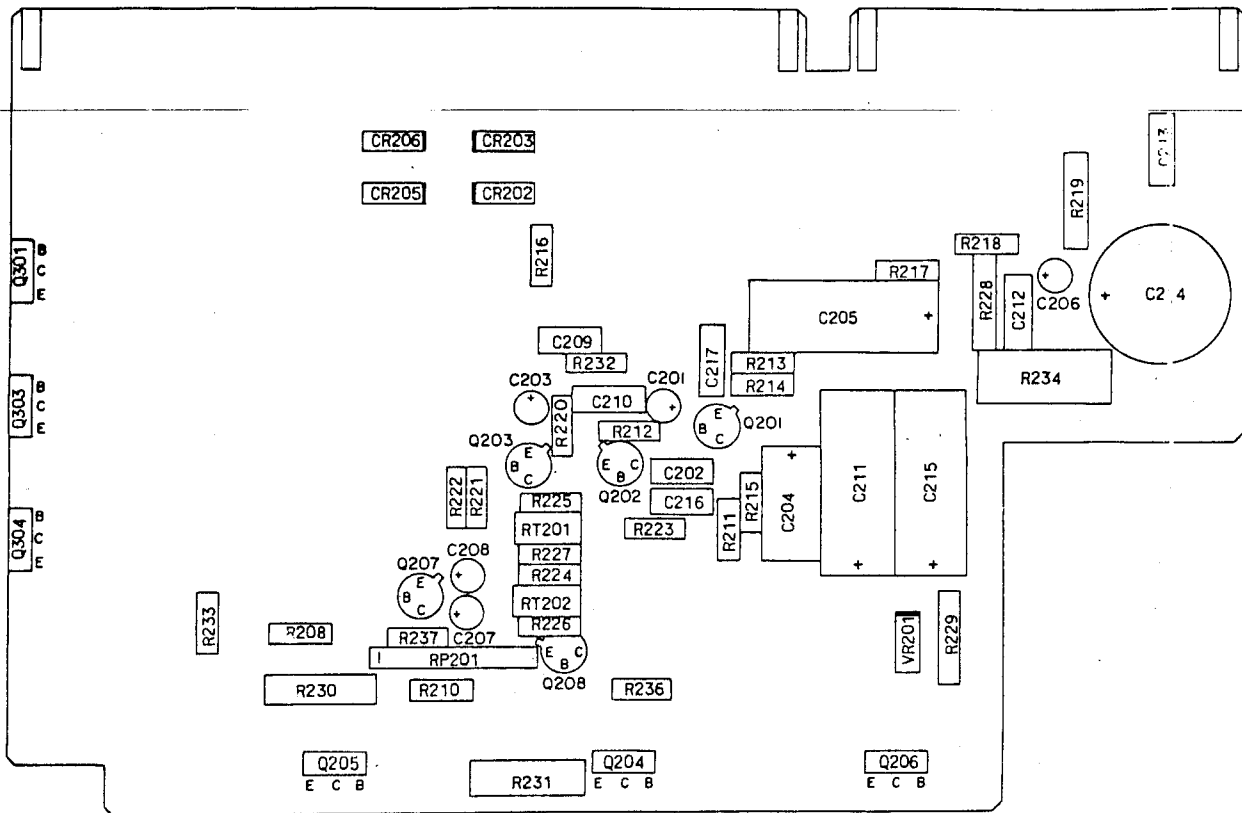
- NOTES:
- ① UNLESS OTHERWISE SPECIFIED; RESISTANCE VALUES ARE IN OHMS, CAPACITANCE VALUES ARE IN PICOFARADS, AND ALL DIODES ARE TYPE 1N4454.
 - ② FOR INTERNAL BOARD WIRING SEE MARKER BEACON RCVR SCHEMATIC.
 - ③ RP201 IS 500 OHMS, CPN 350-4000-080.

628-6691

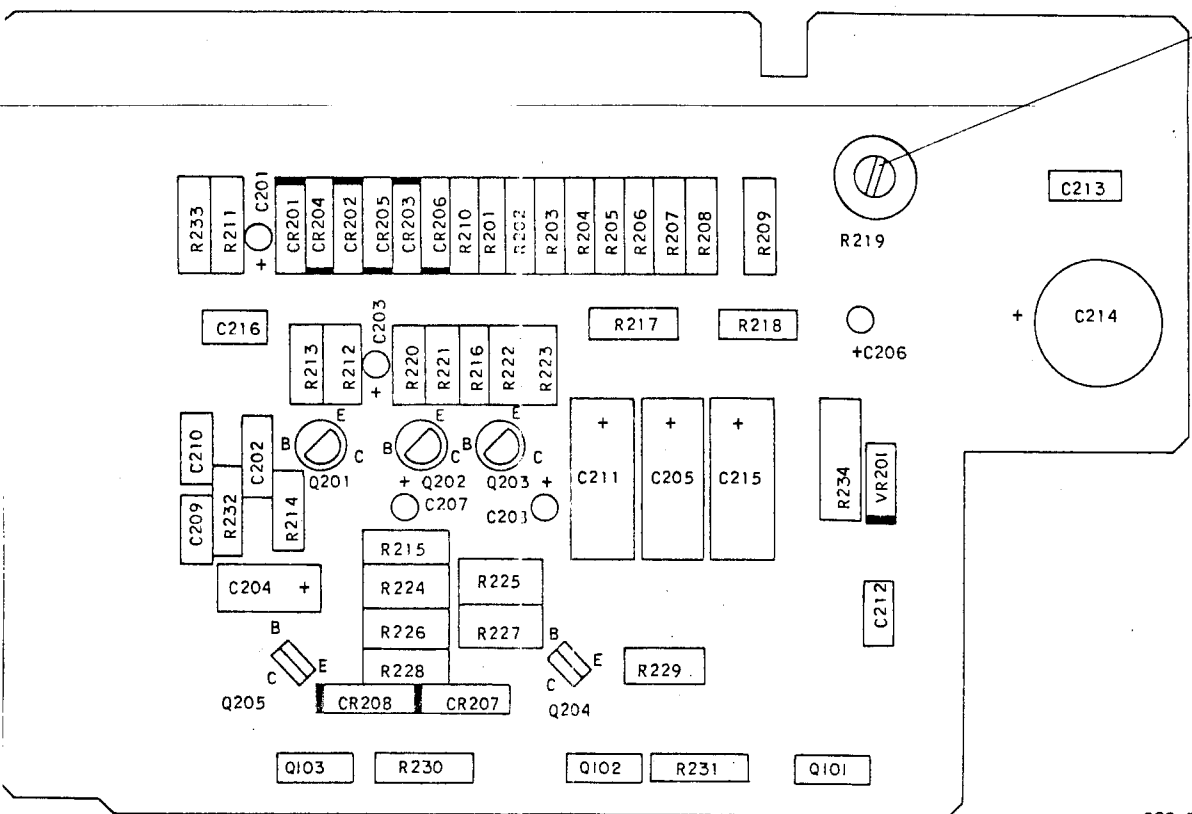
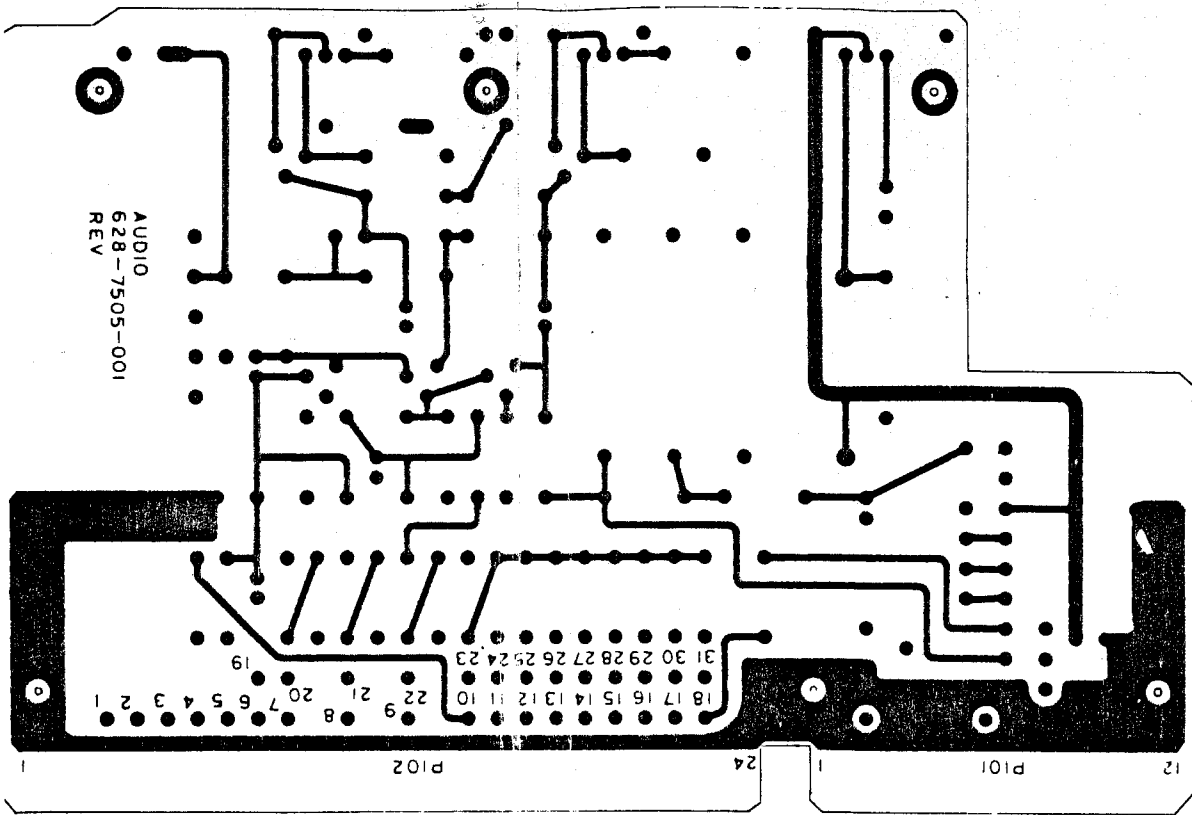
AMR-350 Audio/Marker Panel, Effective Audio Board
 Number 628-6114-XXX, Schematic Diagram
 Figure 6-21



AMR-350 Audio Board, Effective Board Number 628-6114-001, Component Location Diagram
Figure 6-19



AMR-350 Audio Board, Effective Board Number 628-6114-002, Component Location Diagram
Figure 6-20



NOTE: DIODES CR201 AND CR204 ARE USED IN AMR-350H AND AUD-250H UNITS ONLY.

628-5834
TP4-3110-014

AMR-350 Audio Board, Effective Board-Number
628-7505-XXX, Component Location Diagram
Figure 6-23